

Anti-CTLA4, AlpHcAbs[®] Human antibody

Summary

Code	300-504-001
Immunogen	Recombinant human CTLA4
Host	Alpaca pacous
Isotype	VHH domain of alpaca IgG2b/2c fused to Human IgG1 Fc(mutation)
Conjugate	Unconjugated
Specificity	Human CTLA4
Cross-Reactivity	Cross-reactivity with cynomolgus CTLA4
Purity	Recombinant Expression and Affinity purified
Concentration	1mg/ml
Formation	Liquid, 10mM PBS (pH 7.5), 0.05% sucrose, 0.1% trehalose, 0.01% proclin300, 50% Glycerol
Storage	Store at -20 °C, (Avoid freeze / thaw cycles), Stable for 12 months at -20°C

Description

Anti-CTLA4, AlpHcAbs[®] Human antibody is designed for detecting human CTLA4 specifically. Anti-CTLA4, AlpHcAbs[®] Human antibody is recombinant VHH domain of alpaca IgG2b/2c fused to Human IgG1 Fc. Based on ELISA, Anti-CTLA4, AlpHcAbs[®] Human antibody reacts with human CTLA4, and has reactivity with cynomolgus or alpaca CTLA4.

Background

CTLA4 (Cytotoxic T-Lymphocyte Antigen 4) is a CD28-family receptor expressed on mainly CD4+ T cells. It binds the same ligands as CD28 (CD80 and CD86 on B cells and dendritic cells), but with higher affinity than CD28. However, in contrast to CD28 which enhances cell function when bound at the same time as the T cell receptor, CTLA4 inhibits the T cell and prevents it from functioning. Intracellular CTLA4 is also found in regulatory T cells and may be important to their function.

Using antibody with Fc(mutation), the background from Fc receptors will be eliminated.

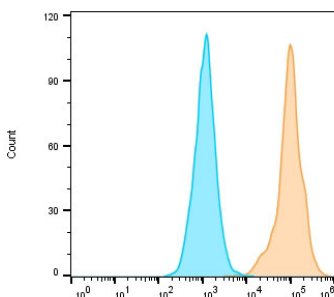
Benefits

- High lot-to-lot consistency
- Increased sensitivity and higher affinity
- Animal-free production

Suggested Working Concentration

ELISA	1:4,000-1:10000
Flow Cytometry	1:200-1:1000

Dilution factors are presented in the form of a range because the optimal dilution is a function of many factors, such as antigen density, permeability, etc. The actual dilution used must be determined empirically.



Flow cytometric analysis of CTLA4-overexpressed CHO K1 cells labeling CTLA4 with 300-504-001 at 1:10000 dilution(yellow) compared with Human IgG1-Isotype control(green). Anti-Human IgG(H+L),H-cAbs[®] Goat antibody(FITC)(023-403-006), at 1/1000 dilution was used as the secondary antibody.

This product is for research use only and is not approved for use in humans or in clinical