

Anti-TROP2, AlpHcAbs[®] Human antibody

Summary

Code	300-502-001
Immunogen	Recombinant human TROP-2
Host	Alpaca pacous
Isotype	VHH domain of alpaca IgG2b/2c fused to Human IgG1 Fc(mutation)
Conjugate	Unconjugated
Specificity	Human TROP-2
Cross-Reactivity	Cross-reactivity with cynomolgus TROP-2
Purity	Recombinant Expression and Affinity purified
Concentration	1mg/ml
Formation	Liquid, 10mM PBS (pH 7.5), 0.05% sucrose, 0.1% trehalose, 0.01% proclin300, 50% Glycerol
Storage	Store at -20 °C, (Avoid freeze / thaw cycles), Stable for 12 months at -20°C

Description

Anti-TROP-2, AlpHcAbs[®] Human antibody is designed for detecting human TROP-2 specifically. Anti-TROP-2, AlpHcAbs[®] Human antibody is recombinant VHH domain of alpaca IgG2b/2c fused to human IgG1 Fc. Based on ELISA, Anti-TROP-2, AlpHcAbs[®] Human antibody reacts with human TROP-2, and has reactivity with cynomolgus TROP-2.

Background

TROP-2, also named tumor-associated calcium signal transducer 2 (TACSTD2), GA733 tumor associated antigen, and epithelial glycoprotein-1 (EGP-1), is a type I transmembrane protein highly expressed in carcinomas. This antigen is a member of a family including at least two type I membrane proteins. It transduces an intracellular calcium signal and acts as a cell surface receptor. Mutations of its gene result in gelatinous drop-like corneal dystrophy, an autosomal recessive disorder characterized by severe corneal amyloidosis leading to blindness.

Using antibody with Fc(mutation), the background from Fc receptors will be eliminated.

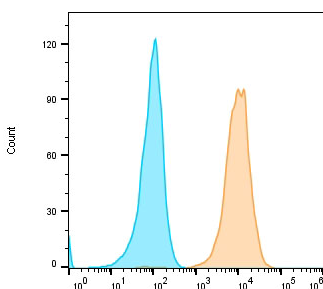
Benefits

- High lot-to-lot consistency
- Increased sensitivity and higher affinity
- Animal-free production

Suggested Working Concentration

ELISA	1:4,000-1:10000
Flow Cytometry	1:200-1:1000

Dilution factors are presented in the form of a range because the optimal dilution is a function of many factors, such as antigen density, permeability, etc. The actual dilution used must be determined empirically.



Flow cytometric analysis of TROP-2-overexpressed CHO K1 cells labeling TROP-2 with 300-502-001 at 1:10000 dilution(yellow) compared with Human IgG1-Isotype control(green). Anti-Human IgG(H+L),H-cAbs[®] Goat antibody(FITC)(023-403-006), at 1/1000 dilution was used as the secondary antibody.

This product is for research use only and is not approved for use in humans or in clinical