

# Anti-Mouse IgG2b(Fc $\gamma$ Fragment specific), AlpSdAbs<sup>®</sup> VHH

## Summary

<b>Code</b>	001-104-001
<b>Immunogen</b>	Recombinant Fc region of mouse IgG2b
<b>Host</b>	Alpaca pacous
<b>Isotype</b>	VHH domain of alpaca IgG2b/2c
<b>Conjugate</b>	Unconjugated(6*his tag and one cys were added at the C terminal of the VHH)
<b>Specificity</b>	Mouse IgG2b (Fc $\gamma$ fragment specific)
<b>Cross-Reactivity</b>	No cross-reactivity with mouse IgG1/2a/3, mouse IgM, rabbit, human, cynomolgus, rat, goat IgG
<b>Purity</b>	Recombinant Expression and Affinity purified
<b>Concentration</b>	1mg/ml
<b>Formation</b>	Liquid, 10mM PBS (pH 7.5), 0.05% sucrose, 0.1% trehalose, 0.01% proclin300
<b>Storage</b>	Store at -20 °C(Avoid freeze / thaw cycles), Stable for 12 months at -20°C

## Description

Anti-Mouse IgG2b(Fc $\gamma$  Fragment specific), AlpSdAbs<sup>®</sup> VHH is designed for detecting mouse IgG2b Fc $\gamma$  fragment specifically. Anti-Mouse IgG2b(Fc $\gamma$  Fragment specific), AlpSdAbs<sup>®</sup> VHH is monovalent, recombinant single domain antibody derived from the variable regions of heavy chain of Alpaca pacous. Based on immunoelectrophoresis and/or ELISA, Anti-Mouse IgG2b(Fc $\gamma$  Fragment specific), AlpSdAbs<sup>®</sup> VHH reacts with the Fc fragment of mouse IgG2b selectively, no reactivity with other mouse IgG subclasses, mouse IgM, or the Fab portion of mouse immunoglobulins.

## Background

Most monoclonal antibodies are generated in mouse. There are five antibody isotypes (IgA, IgD, IgE, IgG, and IgM) from mouse. Each isotype has a different heavy chain. Mouse IgG constitutes 75% of serum immunoglobulins, and IgG is the predominant form of first antibody produced from mouse. Mouse IgG consists of five subclasses-IgG1, IgG2a, IgG2b, IgG2c(inbred mouse strains with the Igh1-b allele have IgG2c isotype instead of IgG2a), IgG3. They are highly homologous and differ mainly in the hinge region. The whole IgG molecule possesses both the Fc region and the Fab region, which possessing the epitope-recognition site. The IgG contains two heavy and light chains, and the heavy chain is about 50 KD and the light chain is about 25 KD. The common IgG is monomeric with a molecular weight of approximately 150 kD.

VHH are single-domain antibodies derived from the variable regions of heavy chain of Camelidae immunoglobulin. The size of VHH is extremely small(<15KDa) compared to other forms of antibody fragment, which significantly increase the permeability of VHH. Thus VHH is considered of great value for research, diagnostics and therapeutics.

## Benefits

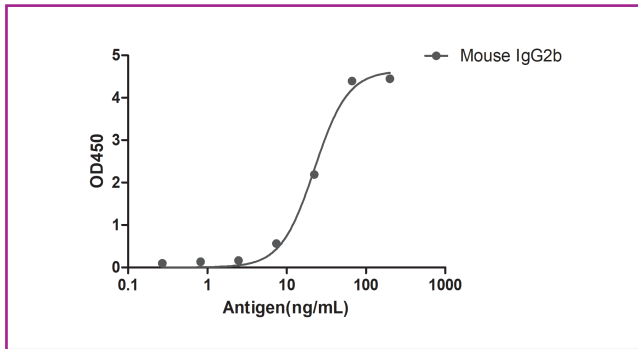
High lot-to-lot consistency  
 Increased sensitivity and higher affinity  
 Animal-free production

## Suggested Working Concentration

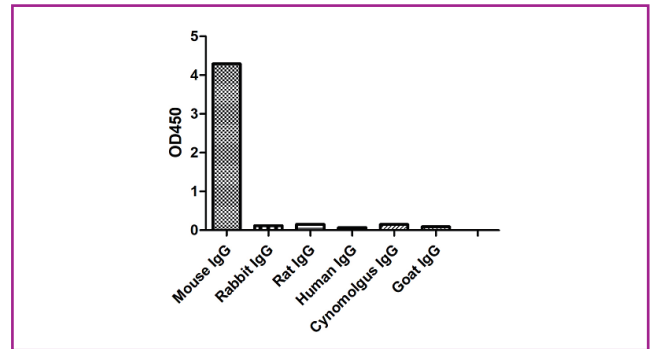
**ELISA** 1:10000-1:50000  
**WB** 1:10000-1:50000

Dilution factors are presented in the form of a range because the optimal dilution is a function of many factors, such as antigen density, permeability, etc. The actual dilution used must be determined empirically.

This product is for research use only and is not approved for use in humans or in clinical



A titer ELISA of mouse IgG2b. The plate was coated with different amounts of mouse IgG2b. 1:10000 dilution of Anti-Mouse IgG2b(Fc $\gamma$  Fragment specific), AlpSdAbs<sup>®</sup> VHH was used as the primary antibody. An HRP conjugated Anti-His Rabbit IgG as the secondary antibody.



ELISA of specificity for different species of IgG. The plate was coated with 2ug/ml of different IgG. 1:1000 dilution of Anti-Mouse IgG2b(Fc $\gamma$  Fragment specific), AlpSdAbs<sup>®</sup> VHH was used as the primary antibody. An HRP conjugated anti-His Rabbit IgG as the secondary antibody.

This product is for research use only and is not approved for use in humans or in clinical