

# Anti-Rabbit IgG for IP, AlpSdAbs<sup>®</sup> VHH(HRP)

## Summary

Code	025-100-005
Immunogen	Rabbit IgG
Host	Alpaca pacous
Isotype	VHH domain of alpaca IgG2b/2c
Conjugate	HRP
Specificity	Non-reduced rabbit IgG(Conformation Specific)
Cross-Reactivity	No cross-reactivity with mouse, human, cynomolgus, rat, goat IgG
Purity	Recombinant Expression and Affinity purified
Concentration	1mg/ml
Formation	Liquid, 10mM PBS (pH 7.5), 0.05% sucrose, 0.1% trehalose, 0.01% proclin300,50% Glycerol
Storage	Store at -20 °C(Avoid freeze / thaw cycles), protect from light, Stable for 12 months at -20°C

## Description

Anti-Rabbit IgG for IP, AlpSdAbs<sup>®</sup> VHH(HRP) is designed for detecting the non-reduced rabbit IgG(conformation specific). Anti-Rabbit IgG for IP, AlpSdAbs<sup>®</sup> VHH(HRP) is based on monovalent, recombinant single domain antibodies to rabbit IgG(conformation specific) coupled to HRP, and the Anti-Rabbit IgG for IP, AlpSdAbs<sup>®</sup> VHH(HRP) detects the non-reduced form of rabbit IgG(conformation specific) selectively, no reactivity with the reduced, SDS-denatured forms.

## Background

When performing immunoprecipitation (IP) followed by western blotting, the denatured rabbit IgG light and heavy chains of the primary antibody used for IP run at approximately 25 and 50 kD, respectively, on the subsequent western blot and can often obscure bands of proteins that have similar molecular weights. Anti-Rabbit IgG for IP, AlpSdAbs<sup>®</sup> VHH(HRP) detects the non-reduced form of rabbit IgG, no reactivity with the reduced, SDS-denatured forms. When the protein was immunoprecipitated by an antibody derived from rabbit, you can still use primary antibody derived from rabbit to detect this protein. Using Anti-Rabbit IgG for IP, AlpSdAbs<sup>®</sup> VHH(HRP) to detect the primary antibody, only native primary antibody can be staining, not denatured heavy and light chains.

## Benefits

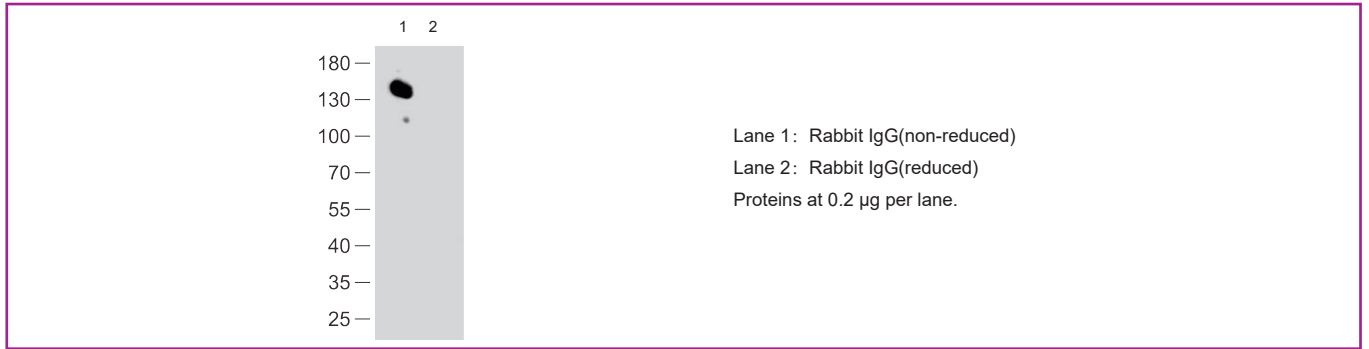
No heavy and light chains in your IP analysis  
 High lot-to-lot consistency  
 Animal-free production

## Suggested Working Concentration

WB 1:5000-1:10,000

**Note:** IP sample should be completely reduced/denatured before loaded onto a western blot(The sample within SDS loading buffer is recommended to be heated 20min in a 100°C heater).

This product is for research use only and is not approved for use in humans or in clinical



Westernblot- Anti-Rabbit IgG for IP, AlpSdAbs® VHH(HRP) detects the non-reduced form of rabbit IgG, no reactivity with the reduced, SDS-denatured forms.

This product is for research use only and is not approved for use in humans or in clinical